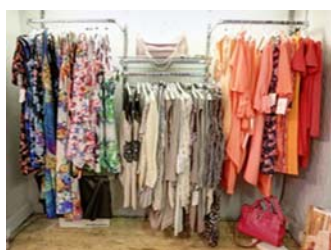


Ref: 3989 - Bee Chic



17 The Cross
Lymm
Warrington
Cheshire
WA13 0HR

BEAUTIFULLY PRESENTED LADIES BOUTIQUE - CHESHIRE

Well known in the residential village of Lymm

Genuine reason for sale due to retirement

Scope for more advertising to be done

Long established and highly reputed

Mens formal dress hire available

Good social media presence

Ideal lifestyle opportunity

Freehold option available

Walk in condition

LEASEHOLD

ASKING PRICE

£25,000 Plus SAV o.n.o

Ref: 3989

Location

This wonderful ladies boutique is located in the highly sought after village of Lymm which is in Cheshire. The shop is located in the four storey premise is built on Georgian and Victorian styles, occupying a prominent central position in the thriving village of Lymm. The business enjoys the large amount of footfall in the village, due to its assortment of shops, restaurants, cafes, attractions and leisure facilities. Surrounding the business is a range of parking facilities which are easily accessible. The village is easily reached via the M56 (junction 7 & 9) and the M6 (junction 10) which are both within 3 miles of the area, this allows Lymm to be easily accessed.

Business History

Online Business Sales are delighted to offer this outstanding ladies boutique to the market, which was established in 1986 by our client. Since our client formed this fantastic establishment, she has invested a great amount of time and money into the business and premises allowing it to be in full walk in condition. Our client has endlessly modernised the business with stunning décor, also with the stock provided ensuring they keep up with the latest fashion and trends but still keep their unique aspects. The only reason our client has instructed us to market this superb business, is due to our clients' desire to take a well deserved retirement. The business offers a beautiful variety of ladies clothing, bags, shoes, jewellery and accessories, generating them a respectable annual turnover. The business also benefits from an excellent professional website at <http://beechic.co.uk>. Our clients' aim is to meet each and every customer's need, making sure they are provided with the best quality of stock along with a professional and friendly service. Early viewing is strongly advised, as this excellent business is not to be missed.

Financial Profile

Turnover upon request
Stock Approximately: £6,000 - £10,000

Tenure

Leasehold
Terms to be confirmed

Opening hours

Monday: 10:00am - 5:00pm
Tuesday: 10:00am - 5:00pm
Wednesday: Closed
Thursday: 10:00am - 5:00pm
Friday: 10:00am - 5:00pm
Saturday: 10:00am - 5:00pm
Sunday: Closed

Accommodation

Glass fronted and well presented character property, brick & tile lay premises with eye catching window displays and a prominent canapé sign, briefly comprising:

GROUND FLOOR

Secure entrance leading to:

Open plan stock area
Beautiful modern décor
Serving/payment counter
EPOS system
Counter displays
Various shelving/racking
Glass table displays with flower centre piece
Glass cabinet displays
Toilet facilities

REAR

Fitting rooms

EXTERNAL

Communal car park near by

Enquire

t: 0345 222 0508 f: 0345 222 0509
e: info@onlinebusinesssales.co.uk

IMPORTANT NOTES: These particulars do not constitute an offer neither should they be relied upon as statements or representations of fact or warranties of any kind. All interested parties must satisfy themselves by investigation, prior inspection and/or formal entry before contact with their solicitor. Neither we nor our principals accept any responsibility whatever in respect of these particulars which are simply offered as a general indication to persons who may be interested.

Viewings and negotiations are to be conducted **STRICTLY** through **Online Business Sales Limited**. No direct approach is to be made to the business under any circumstances

Energy Performance Asset Rating

More energy efficient

A+

A 0-25

B 26-50

C 51-75

D 76-100

E 101-125

F 126-150

G Over 150

Less energy efficient

← 134 This is how energy efficient the building is.